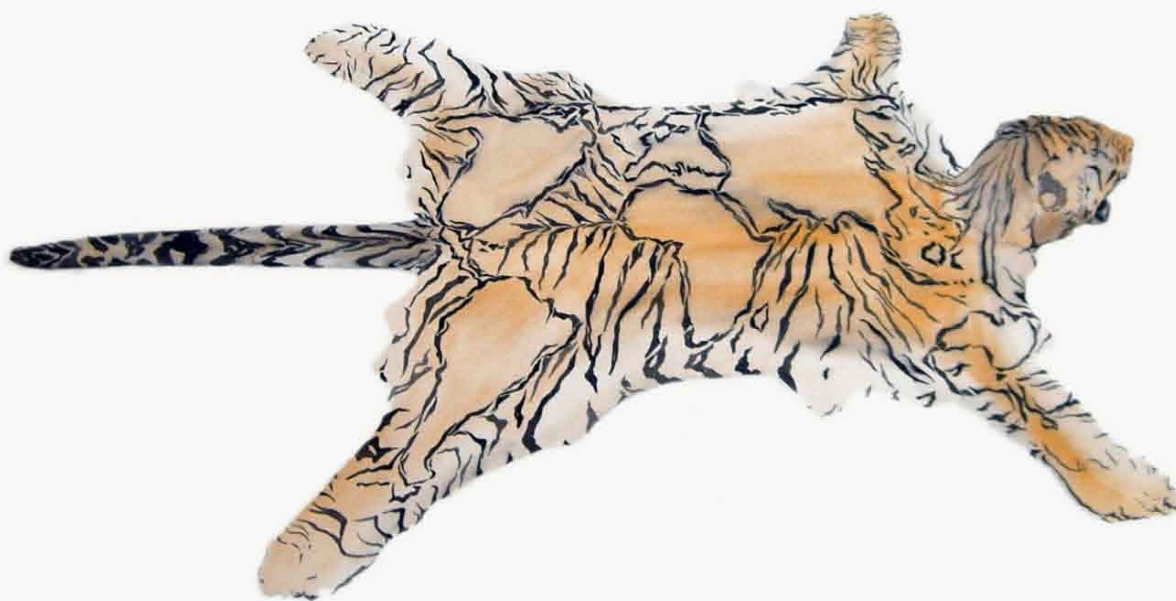


PRESS RELEASE

"WORKS ON PAPER"

Jonathan Hartshorn
Hankang Huang
Holger Kalberg
Dane Patterson
Storm Tharp
Sage Vaughn



Hankang Huang, Tatoo, watercolor on paper, 2007, 113 x 140 cm

16, rue du Simplon
1207 Geneva - Switzerland
info@bertrand-gruner.com

Tel. +41 22 700 74 73
Fax +41 22 752 69 00
www.bertrand-gruner.com

WORKS ON PAPER

17 January – 15 February 2008

Opening reception: Thursday, 17 January, from 6 p.m.

Galerie bertrand & gruner is pleased to announce its new group show of works on paper featuring recent pieces by Jonathan Hartshorn, Hankang Huang, Holger Kalberg, Dane Patterson, Storm Tharp and Sage Vaughn.

Jonathan Hartshorn

Born in 1976, Jonathan Hartshorn lives and works in New York and Albuquerque. Last summer he took part in the group show "International and National Projects" at P.S. 1, New York. This is the first time he is showing in Europe.

Hartshorn's work brings together drawings on paper and everyday objects (photographs, maps, instruction manuals, etc.) in installations that are both forceful and shaky. Behind a certain awkwardness and a low-fi workmanship that he is perfectly conscious of and assumes full responsibility for, Hartshorn possesses a mastery of drawing that is shockingly effective.

Hankang Huang

Born in China in 1977, Hankang Huang lives and works in Paris. This is the first time that his work is being shown in Switzerland.

In watercolors that display bright, acid tones, Huang takes a bitter-sweet look at the world. Drawing his inspiration from the press and the Internet, he combines familiar elements that are apparently opposites in every way (a skeleton and poppies, for instance, or helium balloons and a stag). From this unexpected dialog there emerges a new "reality" that is by turns amusing, serious and metaphorical.

Holger Kalberg

Born in Germany in 1969, Holger Kalberg currently lives and works in London. He was the subject of a solo show at galerie bertrand & gruner in 2006.

Kalberg's works on paper lay out for us urban landscapes. Designed like assemblages that toss together fragments of architecture and nature tamed by man, these sheets reflect a world in which the human, although absent, is all powerful. This is the attitude the artist adopts when he combines the elements of his compositions as he sees fit and mixes representations connected with real life and a range of sources that include digital images, photographs and various contemporary mass media.

Dane Patterson

Born in 1978, Dane Patterson currently lives and works in New York City. This is the first time his work will be shown in Europe.

Rendered in photographic detail, Patterson's recent graphite drawings explore the idea of presence with depictions of vacant rooms in shambles, dummies made from stuffed clothing, as well as various methods of blocking portrait subjects from view. These images act, in part, as visual cues for the viewer to imagine something that is not depicted in addition to what is, the space as it is expected to appear.

Storm Tharp

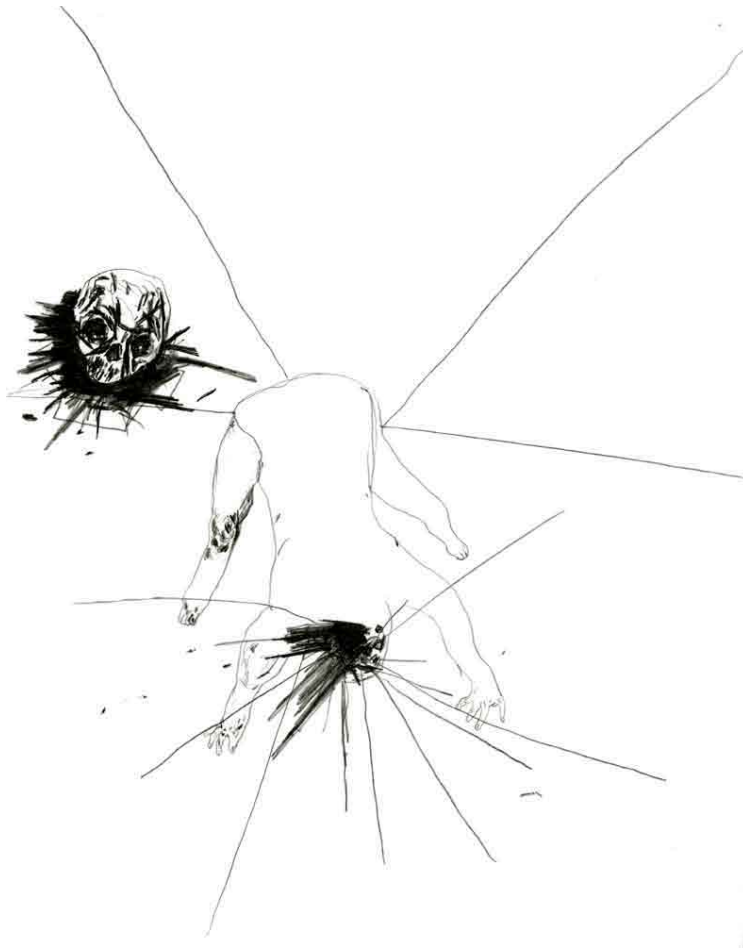
The painter and sculptor Storm Tharp lives and works in Portland, Oregon. This exhibition is the first time he is showing his work in Europe and marks the beginning of his collaboration with galerie bertrand & gruner. He will present a new series of drawings called "Silent Movie" during a solo show scheduled for November 2008.

Done in mixed media (gouache and ink), Tharp's portraits on paper are comical and very elegant at one and the same time. The subjects of these portraits stand out for the painstaking care applied to their dress (delicacy of the motifs, diversity of the materials, etc.). Yet this refinement contrasts with their faces, strictly speaking. Irregular and deformed by splattered ink, they seem to betray the inner ferment and secret torments of the human soul.

Sage Vaughn

Born in 1976 in Oregon, Sage Vaughn lives and works in Los Angeles. He mounted his first solo show in Europe at galerie bertrand & gruner in 2007.

Vaughn's whole world is present in his latest works on paper, in which violence and gentleness exist side by side in a precarious balance. The works feature children who are alternately superheroes and victims of the hostility shown by the surrounding world. The refinement of Vaughn's chosen technique (India ink and oil) lends these sheets a light touch that perfectly matches their content.



Jonathan Hartshorn, *I Am Not A White Devil*, 2007, graphite on paper, 34 x 22 cm



Dane Patterson, *Untitled (quiet)*, 2005, graphite on paper, 27.9 x 23 cm